

2009-07-15 Typical Global Enterprises Deploy Cell Janus for Intranet Network Resiliency and Traffic Optimization

### Background

Most of the global enterprises had a headquarter office and many remotes offices located in other countries such as Asia Pacific regions. They required a very reliable intranet and internet connections of broadband network for its worldwide business. All the remote offices link up their internal networks to their headquarter office for sharing intranet access and service for daily business. In the early stage, all the networks were designed to connect one traditional ADSL service provider with router. The network did not have any protection from outages or capable of automatic failover. Their applications or IP services such as Voice over Internal Protocol (VoIP) or video conference service could be down and ultimately their business could be affected seriously if the network WAN links were outage.

In order to maintain 24x7 business continuity, most of enterprises planned the network connections to multiple of Internet Service Providers (ISP) to increase network availability and protect against any physical WAN links outages. At the same time, a robust routing equipment was chosen with load balancing, compatible to different network connectivity and fail-over capability for them to deploy into their network infrastructure.

### The Cell Janus Solution

Cell Janus, a Multi-WAN Service Gateway is a Multi-Home of network device that works with existing DSL network, connects to other broadband network, utilizes common networking protocols, and requires no special services from your ISPs. Cell Janus provides inbound & outbound load balancing, advance routing and other advanced features to aggregate the broadband network bandwidth and optimize the different IP applications. By the particular setup in the enterprise network, it can make the best use of the 2 or 3 network scenarios: the MPLS network, DSL network and others. If one of the networks is outage, all the traffics can be routed to the other one without any interruption. The overall network and internal applications can be completely protected.

For any one of remote offices in Asia, it can communicate with their headquarter office in Middle East by a dedicated channel in particular. Through the WAN-WAN forwarding feature of our Cell Janus, the traffic can be routed from the internal network of Asia to the head quarter. Cell Janus CX provides an intelligent routing service, link monitoring capability and automatic fail-over to keep the connections stable for the remote offices without complex configuration.

Cell Janus provides monitored destination route that assigns the route base on the destination network, protocol and port range. With Janus Link-guard function, it can monitor the healthy status for all WAN links of the network. E.g. VoIP service is assigned to the MPLS network and the internet data service is assigned to DSL network. Janus will monitor VoIP gateway and Proxy server. If the DSL network downs, all the Internet traffic route to uses MPLS Network. Janus keeps monitoring Proxy server through DSL network, Internet traffic will route back to DSL network automatically if the DSL network becomes available again.

### Executive Summary

**Region of Customers :**  
SEA/Asia Pacific, Japan

**Industry:**  
Large Enterprises, Manufacturers or Multi-National Companies.

**Business Challenge:**  
For large enterprise In the Asian region, there are many remote offices in different countries that are connected to the Asian Headquarter network for accessing the intranet network and external internet for voice communication, video conference and data access for their daily business. Therefore, an extremely reliable of the network infrastructure is important for them to access.

**Solution:**  
The Cell Janus solution is deployed to provide a robust internet and intranet network access to both of DSL and MPLS network providers. Cell Janus CX products enable the high speed aggregation with network resiliency, intelligent routing, and traffic optimization to maintain their business continuity.

**Business Value:**

- Utilized affordable cost for alternative broadband line connections.
- Faster deployment without complex router re-configuration.
- Optimized different IP traffics (VoIP, Video & Data) over Intranet network with a quality level.

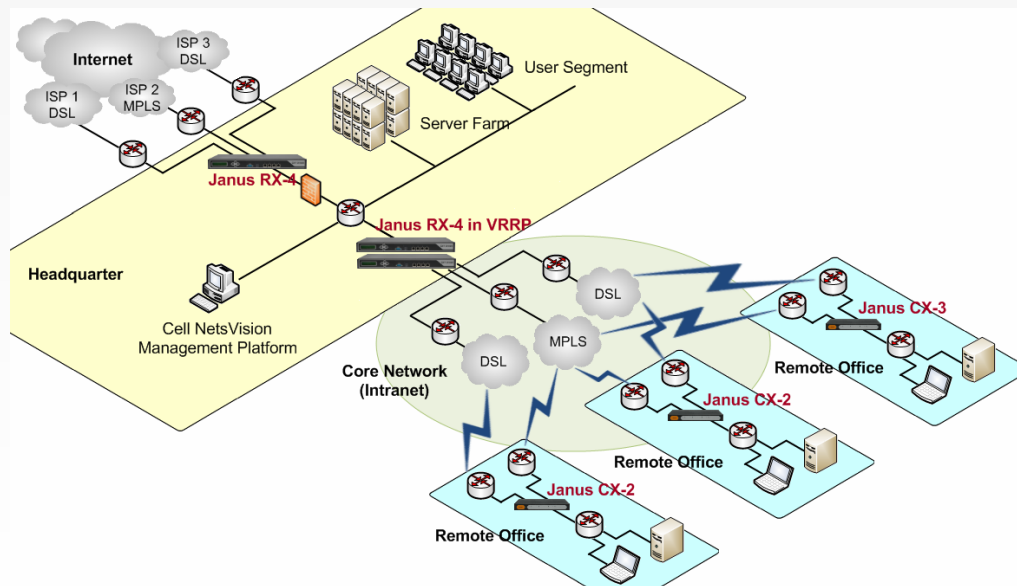


**Cell Janus CX, 40/100Mbps**  
Multi-WAN Service Gateway



**Cell Janus RX, 300Mbps**  
Multi-WAN Service Gateway

### Typical Application



### Key Benefits to Customer

The Cell Janus CX product solution has been deployed into customer intranet and internet access networks with a simple plug and play installation. The overall network performance becomes very stable and outages of a network do not affect the whole infrastructure. Also, Cell Janus supports VRRP feature with a redundant unit to increase the network reliability by eliminating the single point of any hardware failure.

With a simple network configuration and design by Cell Janus, customer only requires an IT support in headquarter office to manage the overall network configuration in order to minimize the maintenance cost eventually. Finally, they can expand their network availability and resiliency with a very affordable cost solution and increase the utilization of the network resource.

#### About Cell Technology

Cell Technology headquartered at Hong Kong SAR, a network & security technology provider specializes in design, develop and deliver innovative and intelligent IP packet processing platform into software and hardware appliances. Cell product solutions including Cell IPS, UTM, CMC, Janus, TMS, NetsVision and NetsAccess address the business needs that optimize the IP network performance, secure the network security and resiliency, and manage the quality of IP services. For more information, please visit [www.cell-technology.net](http://www.cell-technology.net).